

Dusk-to-dawn LED Outdoor Barn Light (Photocell Included)

(The "XX" represents Color temperature.)

Model No.: ST04-XX01 ST05-XX01

Power: 35W 50W

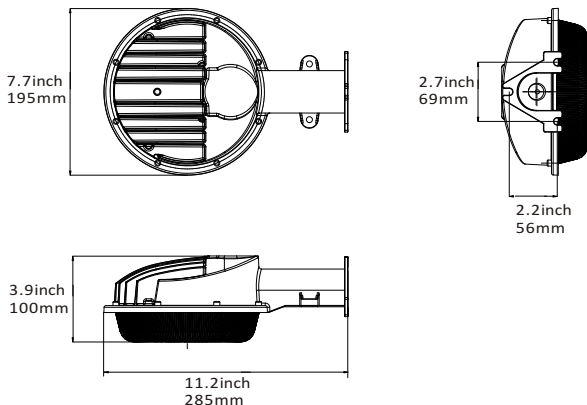
1.Features

- Universal voltage AC120-277V 50/60Hz.
- 120lm/W for fixture.
- Using high quality SMD2835 chips.
- Constant current power supply.
- High Power Factor >0.9, Low THD Driver.
- Constructed from die-cast aluminium, with a PC cover, and rated at Ip65.
- Respirator design: Balance the different pressure between the atmosphere and the shell, it is water proof also defog and avoiding the drop condensation, extend the product lifespan.
- 5 years Warranty.
- Available with Photocell sensor.
- UL certificate.



2.Drawing

Unit:mm

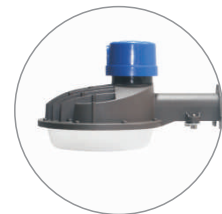


Photocell sensor (optional)

Photo electric switch for outdoor use
Lighting from early evening & Dark when dawn



Photocell Sensor A



Photocell Sensor B

3.Application

Widely used in Shopping mall, hotel, shop, showroom, cafe, restaurant, garden, porch, etc.



LM80



ErP



IP65



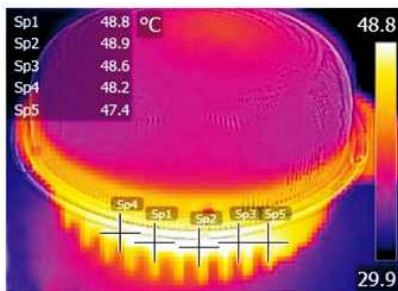
4.Parameters

The "XX" represents Color temperature.

Item	Model	ST04-XX01	ST05-XX01
General Performance	Power	35W	50W
	Lumen Output	4200lm	6000lm
	Efficacy	120lm/W	120lm/W
	Color Temperature	3000K/4000K/5000K/5700K	3000K/4000K/5000K/5700K
	LED type	SMD 2835	SMD 2835
	CRI	Ra>70	Ra>70
Electrical	Power Factor	>0.9	>0.9
	Input Voltage	120-277VAC,50/60Hz	120-277VAC,50/60Hz
	THD	<20%	<20%
	Beam angle	120°	120°
Physical	Weight	1.35Kg	1.4Kg
	Dimension	285x195x100mm	285x195x100mm
	Housing	Die-cast aluminum	Die-cast aluminum
	Cover	PC	PC
	Mounting	Wall Mounting	Wall Mounting
	Operation Temperature	-35°C~55°C	-35°C~55°C
	Finish	Brown	Brown
	IP rated	Ip65	Ip65
Certificate	Certificate	CE, RoHS	CE, RoHS
	UL	E487752	E487752
	Material Usage	RoHS compliant	RoHS compliant
	Driver Class	Class II	Class II
	LED Class	Rated to 50,000 hours	Rated to 50,000 hours

5.Chip Temperature Test

Great heat dissipation performance, good for LED lifespan



LM80



ErP

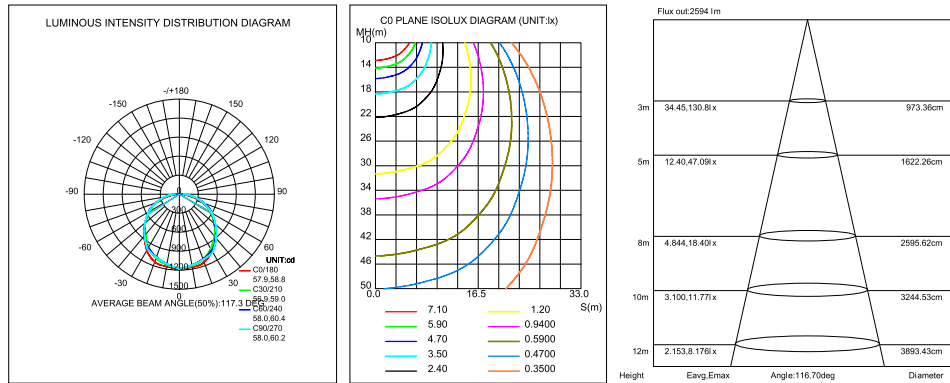


IP65

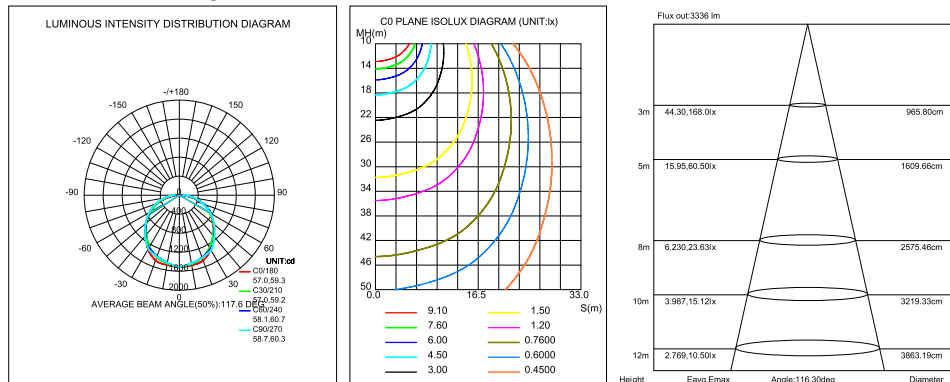


6. Distribution Curve

35W LED Yard Light



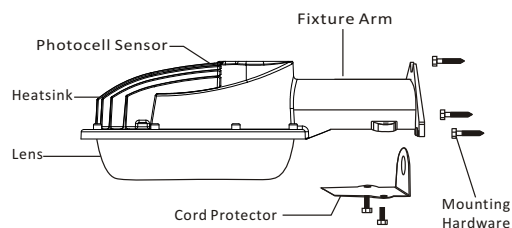
50W LED Yard Light



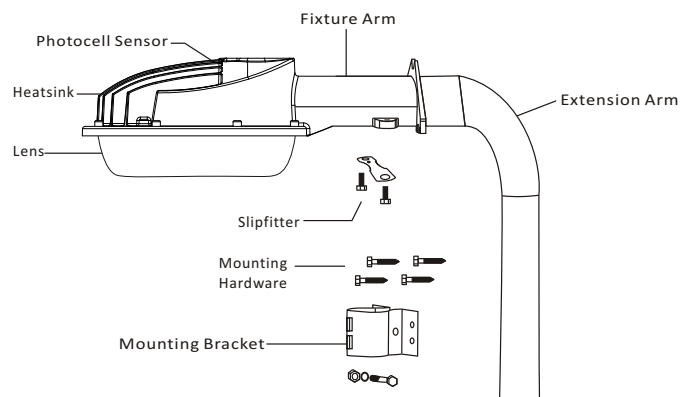
7. Installation Instruction

1. Dusk-to-dawn LED Outdoor Barn Light luminaire features a design that can be mounted to any vertical surface using lag bolts or other comparable and suitable anchors, with a wiring compartment that is easily accessible without the need to remove the lens or disassemble the fixture.
2. Dusk-to-dawn LED Outdoor Barn Light can also be mounted to existing 1-1/2" or 1-5/8" pipe mounts, offering the installer the flexibility to satisfy many different mounting applications and requirements.
3. This is especially useful when using the LED Outdoor Barn Light to retrofit older dusk-to dawn luminaires.

Wall Mounting



Arm Mounting



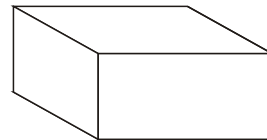
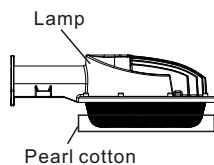
8.Packaging

Packaging: Wall Mounting

No.	Model	Power	N.W.	Inner Box	Qty/ctn	G.W	Outer Carton
1	ST04-XX01	35W	1.35Kg	300x200x110mm	6	9.0Kg	410x310x350mm
2	ST05-XX01	50W	1.40Kg	300x200x110mm	6	9.3Kg	410x310x350mm

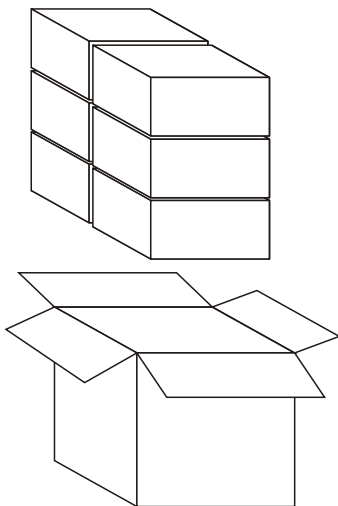
Packaging: Arm Mounting

No.	Model	Power	N.W.	Inner Box	Qty/ctn	G.W	Outer Carton
1	ST04-XX01	35W	1.90Kg 4.18lb	---	1	2.25Kg 4.95lb	430x260x145mm 17"x10.2"x5.7"
2	ST05-XX01	50W	1.95Kg 4.29lb	---	1	2.30Kg 5.06lb	430x260x145mm 17"x10.2"x5.7"



Packaging: Wall Mounting

Qty: 6PCS



Inner Box 300x200x110mm(11.8"x7.9"x4.3")

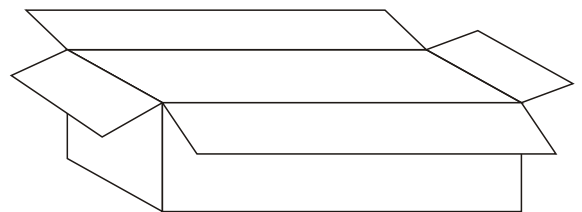
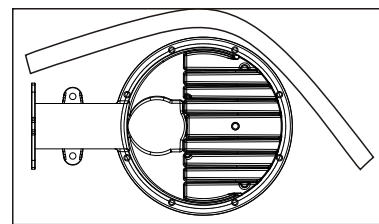
Qty/ctn 6PCS

Outer Carton 410x310x350mm(16.1"x12.2"x13.8")

Packaging: Arm Mounting

Qty: 1PCS

Extension Arm(1PCS)



Qty/ctn 1PCS

Outer Carton 425x250x130mm(16.7"x9.8"x5.1")



LM80

